

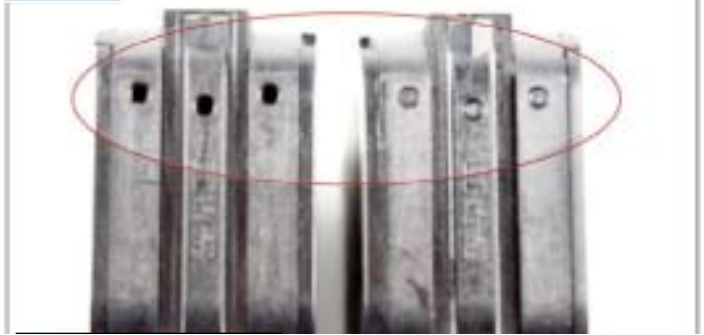
eCycle Group's Visual Inkjet Inspection Guide



Our inspectors check:

- Electric Strip Integrity
- Damaged/Cracked Cases
- Failed Circuit Tester
- Missing/Damaged Print Heads
- Non-Virgin Status
- No OEM Label

Photo 3



Non-virgin. Fill plugs have been removed.

Photo 1



Damaged / Cracked Case. Note highlighted chips on the side of the cartridge.

Photo 4



Electric Strip. Electric strip is peeling. If the circuit is peeling even a little bit, the cartridge will be rejected.

Photo 2



Missing / Broken Print Head. Cartridge on right is missing print head.

Photo 2



Damaged / Broken Case. The plastic side case is missing.

Damaged Inkjets



Photo 6



Non-virgin. The cartridge has a non-OEM hole drilled into it for refilling purposes.

Photo 7



Missing / Broken Print Head. Print head is scratched. The print head is very sensitive so any type of scratch or abrasion can affect the cartridge in a negative way.

Photo 8



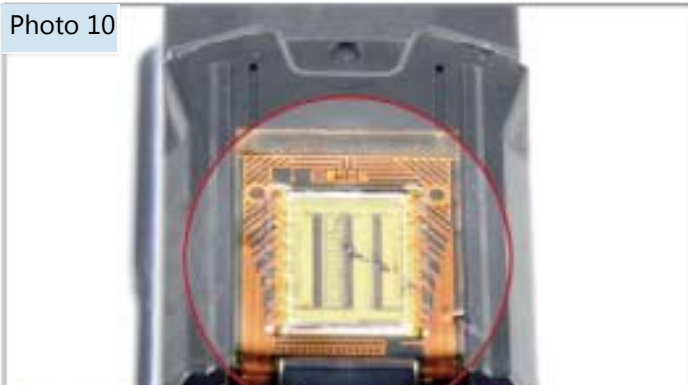
Non-virgin. The cartridge has a non-OEM hole drilled into it for refilling purposes.

Photo 9



Broken Tab. Broken tabs on the pork chop style cartridges (23D's, 6625's, 41's and 78's). The tabs are very fragile and should be protected whenever possible.

Photo 10



Missing / Damaged Print Head. Missing print-head & scratch or abrasion on the Print Head.

Photo 11



Broken Tab. Note the tabs.

Damaged Inkjets

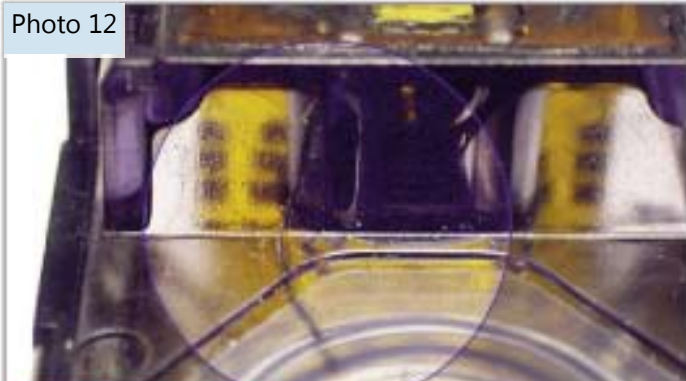


Photo 12



Damaged / Cracked Case. Hairline crack on cartridge case.



Photo 13



Damaged / Cracked Case. Chips on the side of the cartridge.



Photo 14



Electric Strip Integrity.

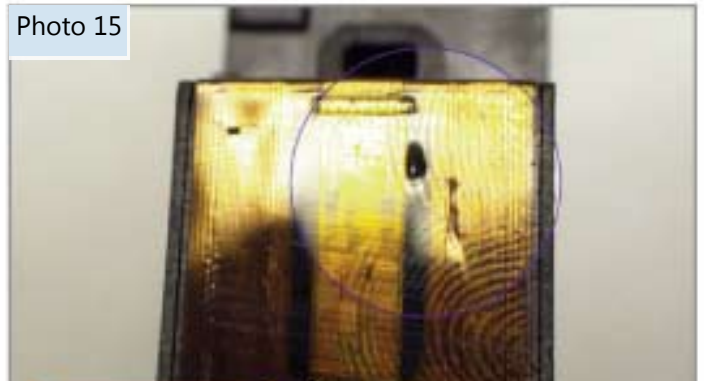


Photo 15



Missing / Damaged Print Head.

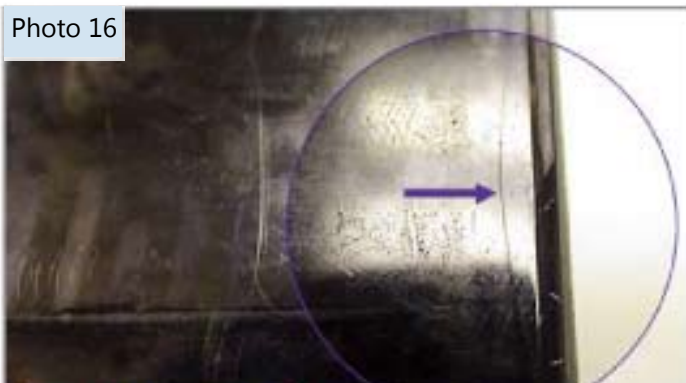


Photo 16



Broken Tab.

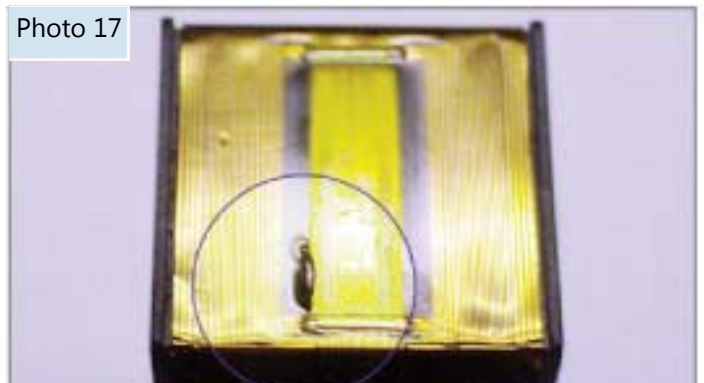


Photo 17

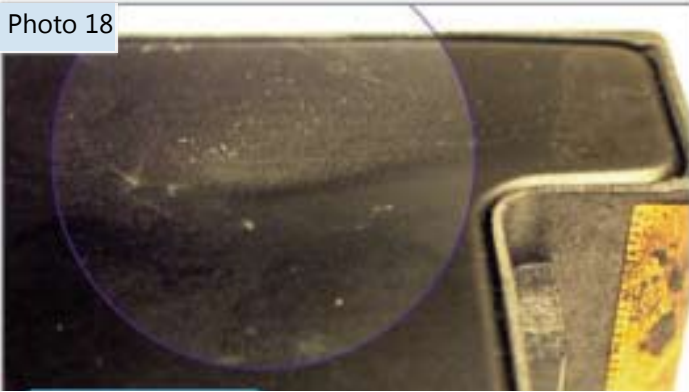


Missing / Damaged Print Head.

Damaged Inkjets

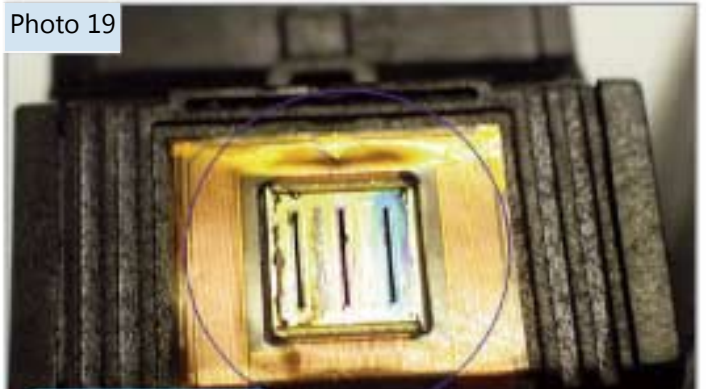


Photo 18



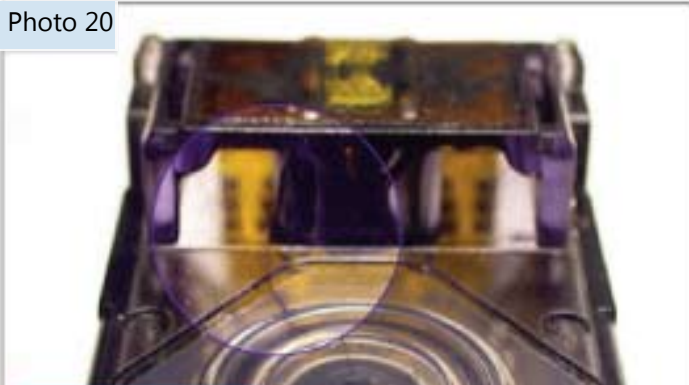
 **Damaged / Cracked Case.** Dented surface.

Photo 19



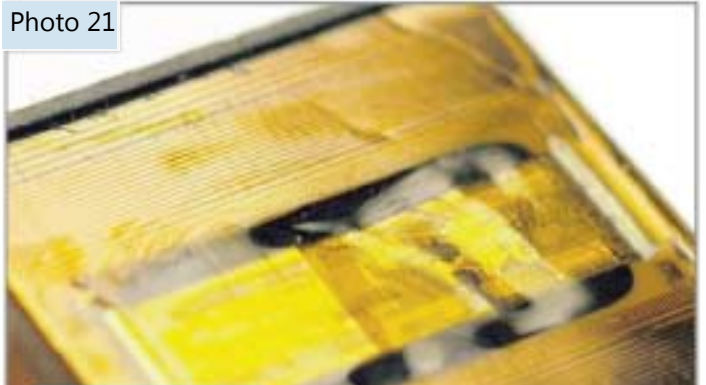
 **Missing / Broken Head.**

Photo 20



 **Damaged / Cracked Case.** Hairline crack.

Photo 21



 **Missing / Damaged Print Head.**

Photo 22





 **Missing / Damaged Print Head.**
The highlighted item is missing the print head.

Photo 23

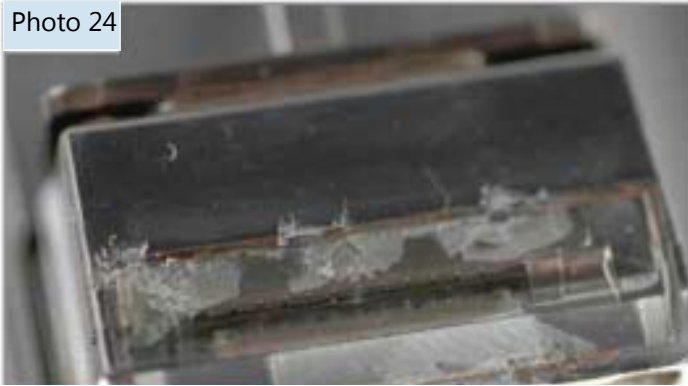


 **Missing / Damaged Print Head.** Please note the scratches on the surface.



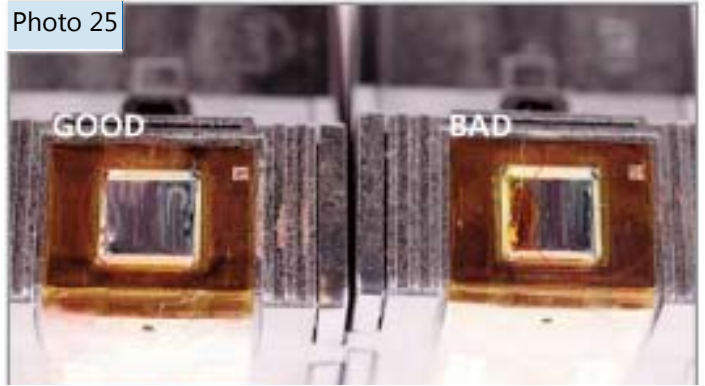
Damaged Inkjets

Photo 24



Missing / Damaged Print Head. The plastic print head is lifted, creating air pockets.

Photo 25



Damaged Print Head.

Photo 26



Low Capacity Trial Cartridge. Please note the serial number on the G50/1970 series of Lexmark. The numbers that start with 50 and above are trial cartridges and are rejected for low capacity.

Photo 27



Low Capacity Trial Cartridge. Please note the serial number on the G50/1970 series of Lexmark. This is a trial cartridge and is rejected for low capacity.